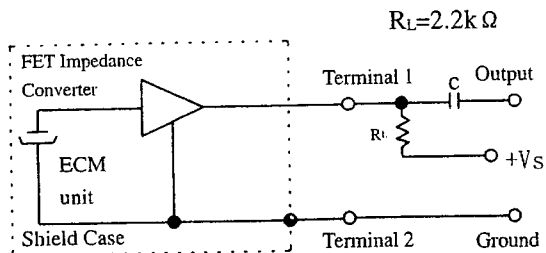
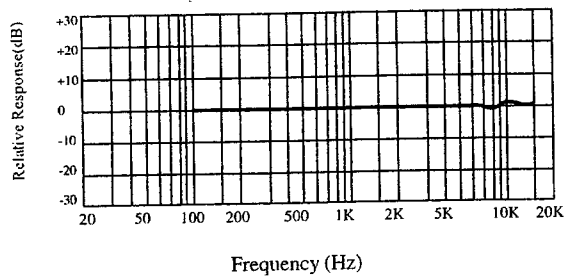


| Parameter | Value | Units |
|-----------------------|------------------------------------|---------------------|
| Directivity | Omnidirectional | n/a |
| Sensitivity | -34/-36/-38/-40 -42/-44 (+/- 3) | 0dB=1V/Pa 1 KHz. |
| Impedance | Low | Ω |
| Current Consumption | 0.5 Max. | mA |
| Operating Voltage | 4.5 | Volts |
| Sensitivity Reduction | Within -3 @ 1.5V | dB |
| S/N Ratio | More than 60 | dB |



| TRMO-6050L-xx-x ECM | | |
|--|--------------|----------------|
| SCALE: Not to Scale | APPROVED BY: | DRAWN BY EDP |
| DATE: 8/98 | | REVISED |
| Transducers-USA Elk Grove Village, IL. USA | | |
| | | DRAWING NUMBER |